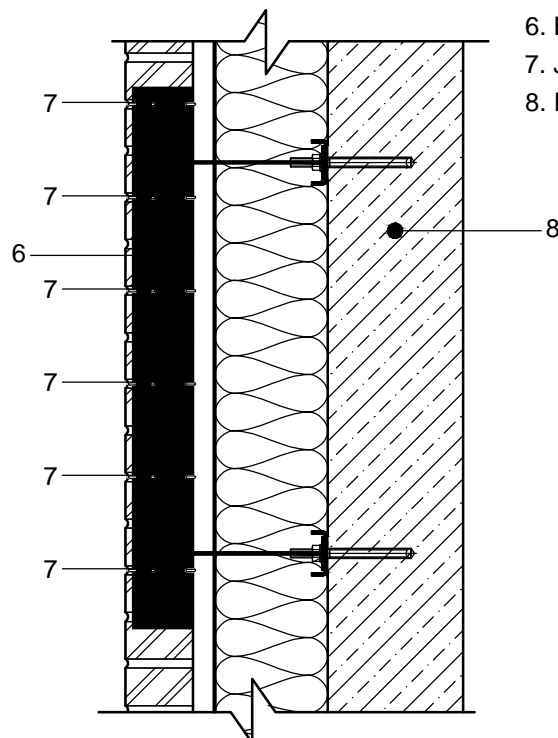


**SECTION 1-1**



1. Facing brickwork 85-120 mm
2. Wall tie WB(WK) with fixer 5.5 pc./m<sup>2</sup>
3. Ventilation box
4. Waterproofing
5. Reinforcement Murfor RND/Z-50 (3 rows)
6. Bracket KP-2
7. Joint S 165 (every two bricks)
8. Reinforced concrete beam