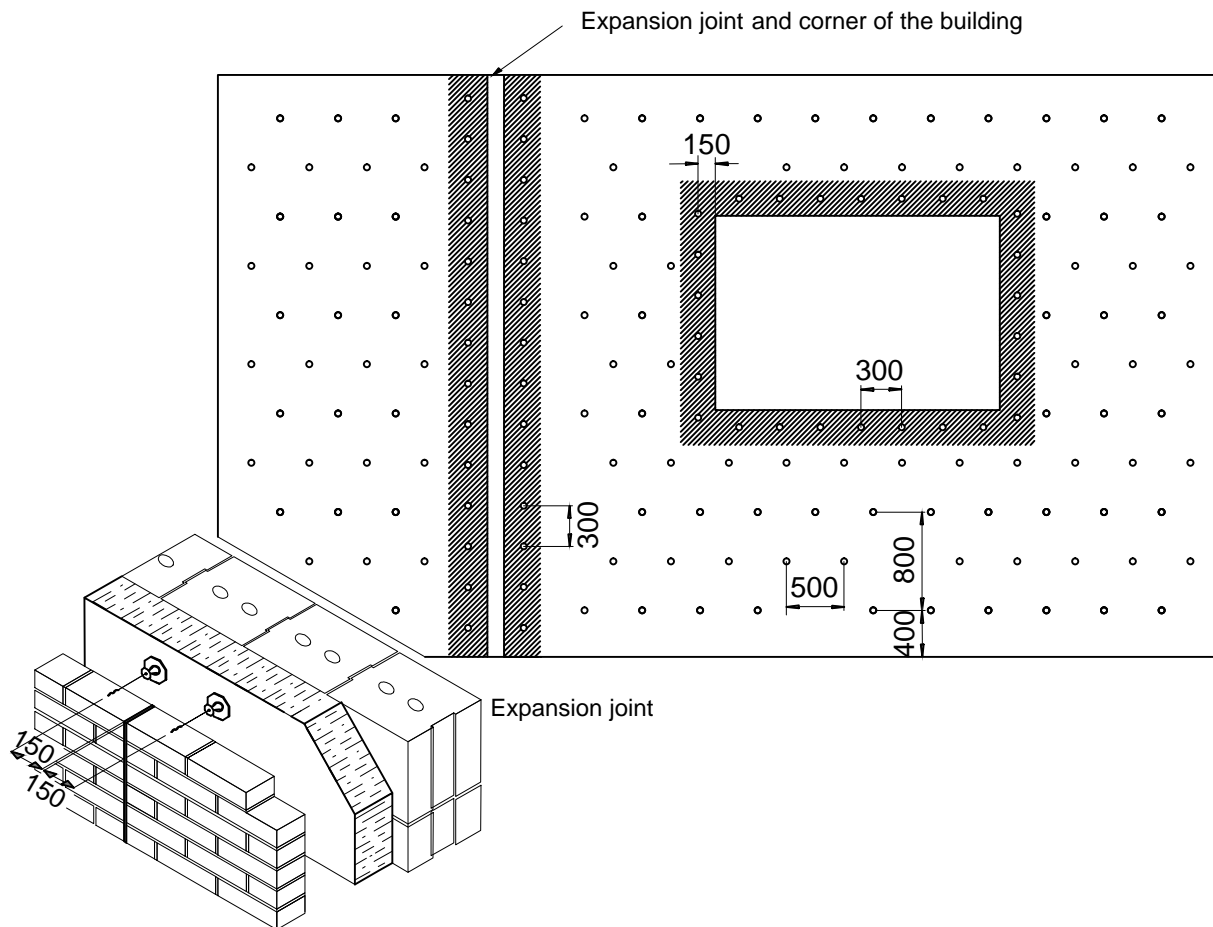
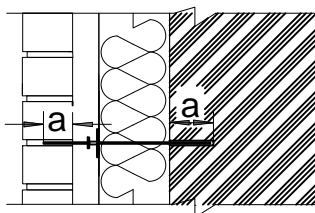


# ANCHORAGE OF BRICK VENEER

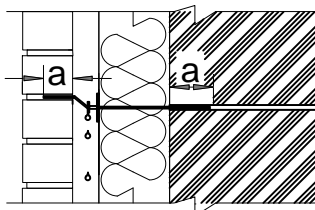
## R1-01



### HORIZONTAL JOINTS IN THE BOTH LAYERS MATCH



### THE ANCHOR IS BENT BECAUSE JOINTS DO NOT MATCH IN THE BRICKWORK



a - 60-80 mm.

The quantity of anchors per 1 sq. m. of a wall depends on many factors. However, in most cases it is required:

- 5 pcs. of anchors per 1 sq. m. of the wall in case of up to 5-storey buildings;
- 7 pcs. of anchors per 1 sq. m. of the wall in case of 5-storey and higher buildings.

On all free edges of brickwork: 3 anchors per 1 running meter should be installed additionally along the perimeter of openings, along expansion joints and at the top end of brickwork.

The type of expansion plastic dowel and the depth of anchoring are selected depending on the material of the carrying wall structure.