

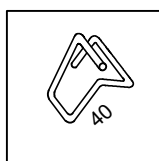
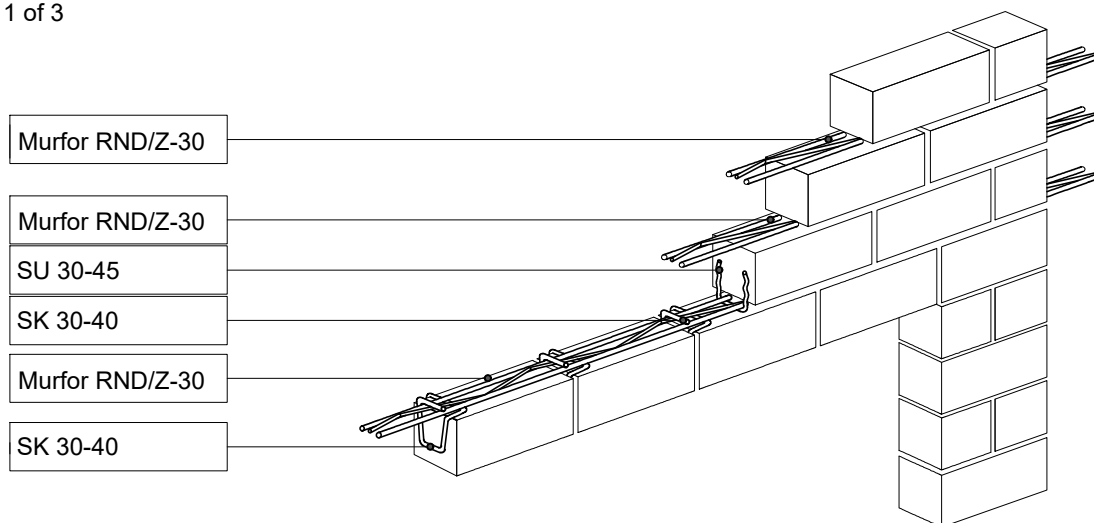
THIN-LAYER DECORATION MASONRY LINTEL

Stretcher course brickwork



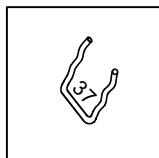
S5-01

Page 1 of 3



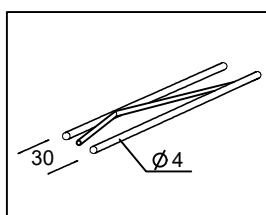
HOOK BAUT SK 30-40

Height (mm).....40
Wire diameter (mm).....3
Stainless steel.....A2



HOOK BAUT SU 30-45

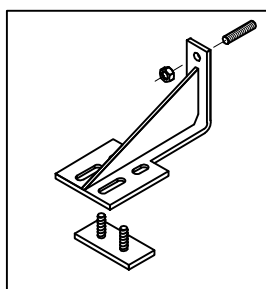
Height (mm).....45
Width (mm).....37
Wire diameter (mm).....3
Stainless steel.....A2



REINFORCEMENT MURFOR RND/Z-30

Width (mm).....30
Length (m).....3,05
Coating.....zinc*

*zinc coating reference 20
(according to EN 845-1+A1)



BRACKET GSP

Stainless steel 1.4301
(according to EN 10088-1)

Lintel consist of at least three course of bricks bonded with mortar. Lintel hooks SK 30-40 should be placed into the mortar, in every vertical joint of the first row of brickwork.

Reinforcement Murfor RND/Z-30 is placed between first and second and between second and third rows. Rods extend beyond the opening edges by at least 300 mm in both sides. Further throughout the height, 1 reinforcement rod at every 300...500 mm

MOUNTING OF BRICK LINTEL S5-02

In this way we mount lintels up to 2 m. In case of large openings suspended brackets should be used (S5-03).

Quantity of brackets and their arrangement above openings are calculated separately in every individual case. The irrigation is very important for silicate bricks masonry.

Class of mortar should be at least M100

THIN-LAYER DECORATION MASONRY LINTEL

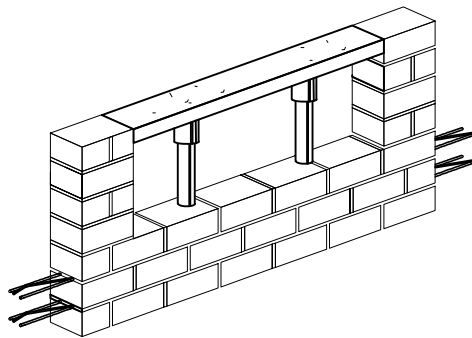
Mounting of lintel

S5-02

Page 2 of 3

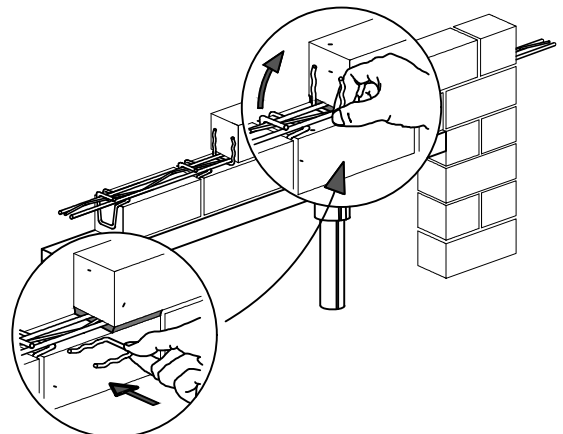


1



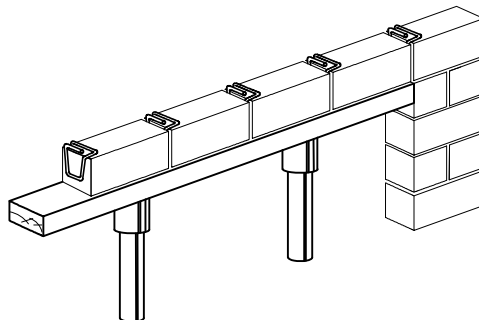
Construction of formwork

4



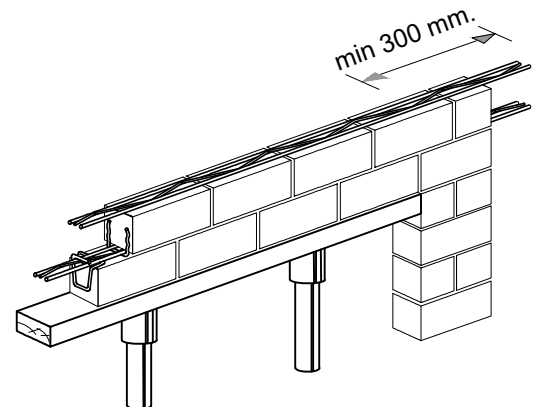
Lintel hooks SU 30-45 in every second vertical joint of the second course

2



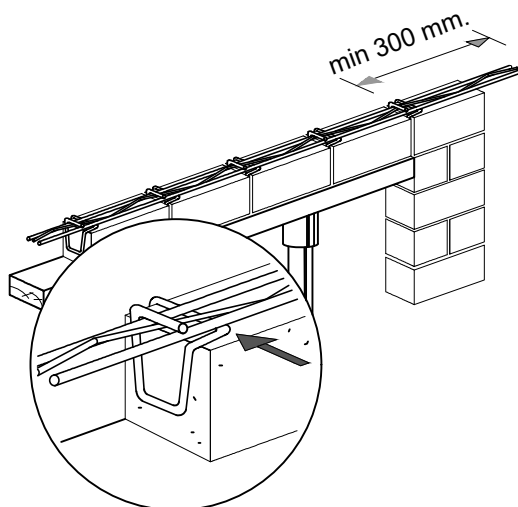
Lintel hooks SK 30-40 in every vertical joint of the first course

5



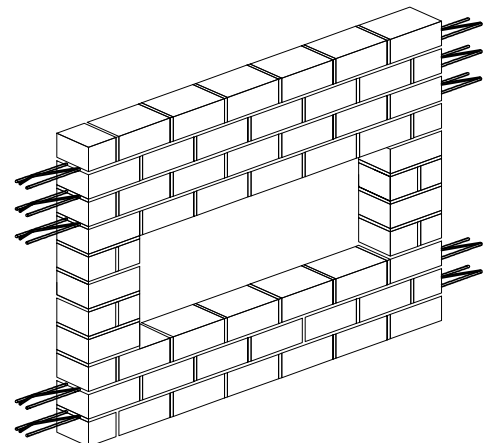
Reinforcement Murfor RND/Z-30 in the second course of brickwork. The number of reinforced masonry rows of the lintel shall be at least 3 rows. Further throughout the height, 1 reinforcement rod at every 300...500 mm

3



Reinforcement Murfor RND/Z-50 is inserted through grooves of lintel hooks. Reinforcement rods extend beyond the opening edges by at least 300 mm in both sides

6



Formwork should be dismantled after 2 weeks

THIN-LAYER DECORATION MASONRY LINTEL

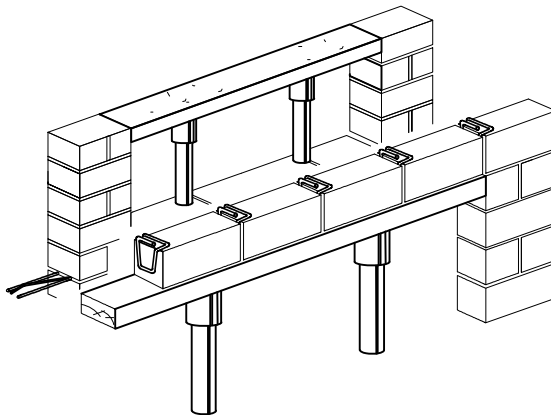
Mounting of lintels with brackets



S5-03

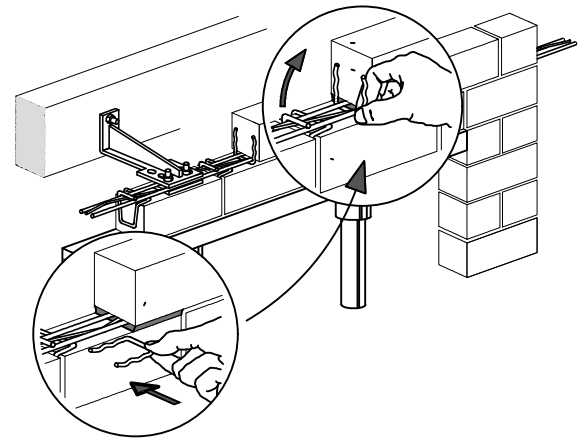
Page 3 of 3

1



Construction of formwork. Lintel hooks SK 50-40 in every vertical joint of the first course

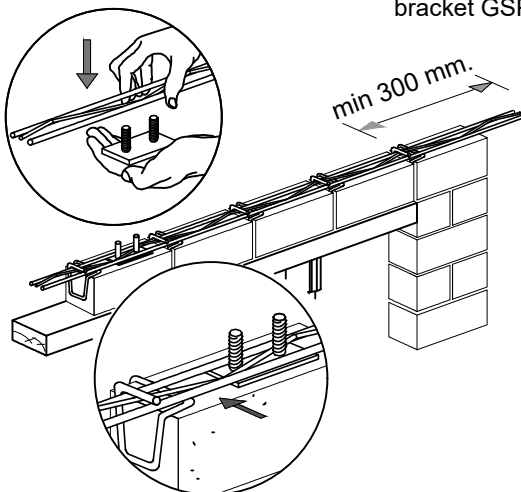
4



Lintel hooks SU 30-45 in every second vertical joint of the second course

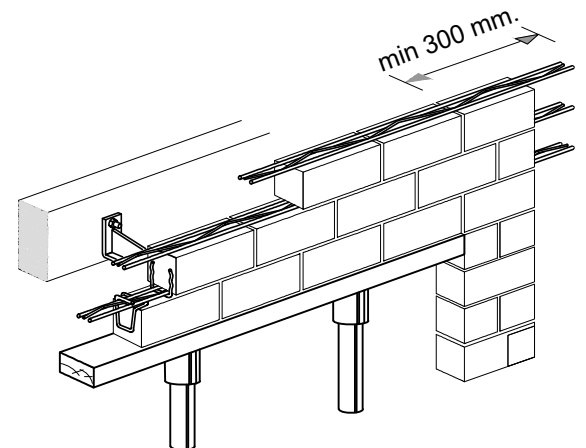
2

Connection of reinforcement Murfor RND/Z-30 with the bottom part of suspended bracket GSP



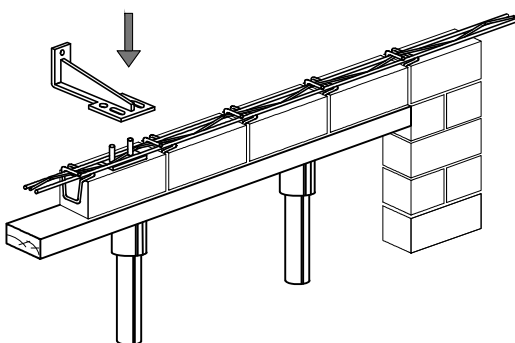
Reinforcement together with the plate should be inserted through grooves of lintel hooks

5



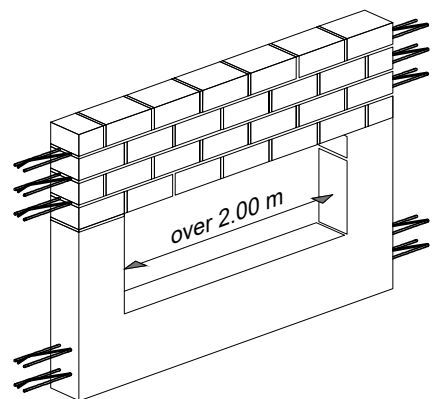
Reinforcement Murfor RND/Z-30 in the second and the third rows of brickwork. The number of reinforced masonry rows of the lintel shall be at least 3 rows. Further throughout the height, 1 reinforcement rod in every 300...500 mm

3



Fixation of suspended bracket GSP

6



Formwork should be dismantled after 2 weeks