

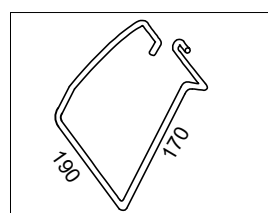
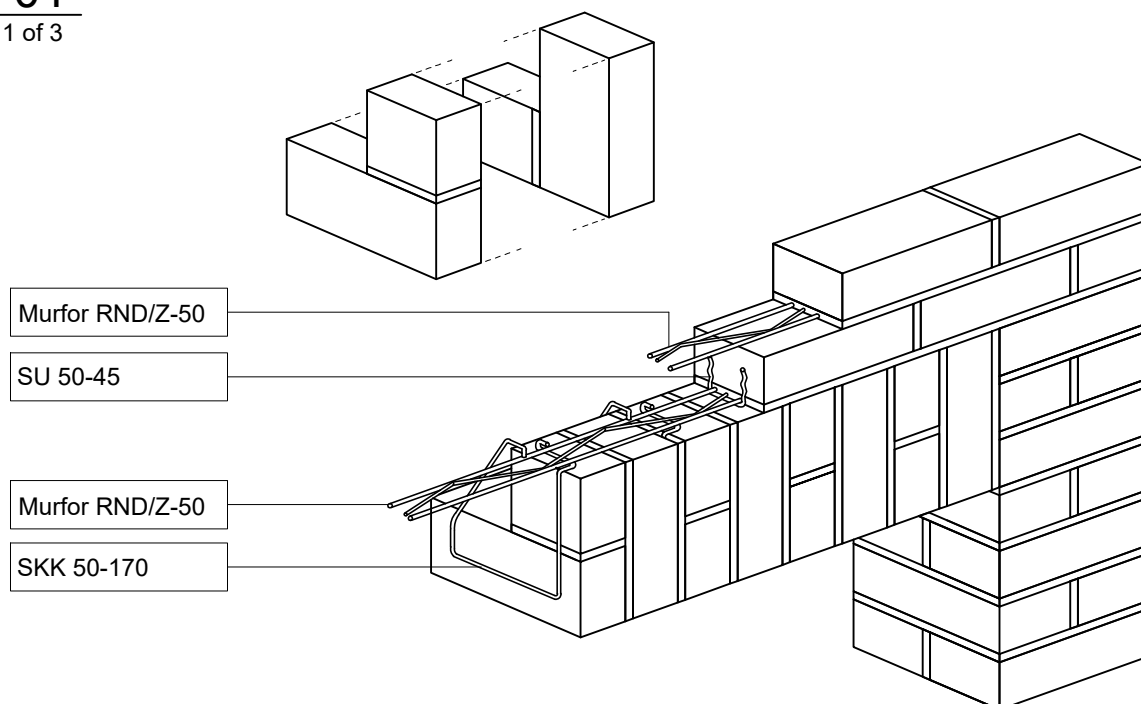
# BRICK LINTEL

## Combined course brickwork



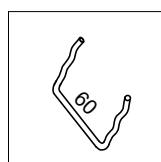
### S4-01

Page 1 of 3



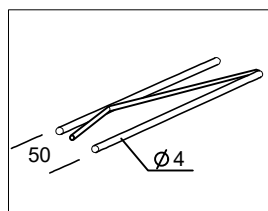
#### HOOK BAUT SKK 50-170

Height (mm).....170  
Width (mm).....190  
Wire diameter (mm).....3  
Stainless steel .....A2



#### HOOK BAUT SU 50-45

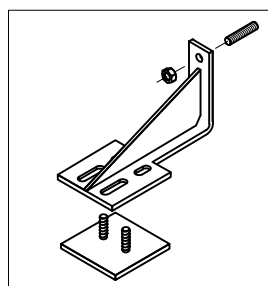
Height (mm).....45  
Width (mm).....60  
Wire diameter (mm).....3  
Stainless steel .....A2



#### REINFORCEMENT MURFOR RND/Z-50

Width (mm).....50  
Length (m).....3,05  
Coating.....zinc\*

\*zinc coating reference 20  
(according to EN 845-1+A1)



#### BRACKET GSP

Stainless steel 1.4301  
(according to EN 10088-1)

Lintel consist of at least three course of bricks bonded with mortar. Lintel hooks SKK 50-170 should be placed into the mortar, in every second vertical joint of the first row of brickwork. Reinforcement Murfor RND/Z is placed between first and second and between second and third rows. Rods extend beyond the opening edges by at least 250 mm in both sides.

#### MOUNTING OF BRICK LINTEL S4-02

In this way we mount lintels up to 2 m. In case of large openings suspended brackets should be used (S4-03).

Quantity of brackets and their arrangement above openings are calculated separately in every individual case. The irrigation is very important for silicate bricks masonry.

Class of mortar should be at least M10

# MOUNTING OF LINTEL

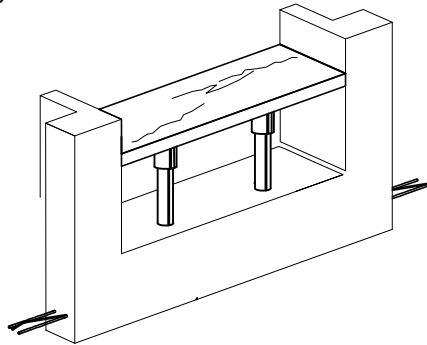
## Combined course brickwork

**S4-02**

Page 2 of 3

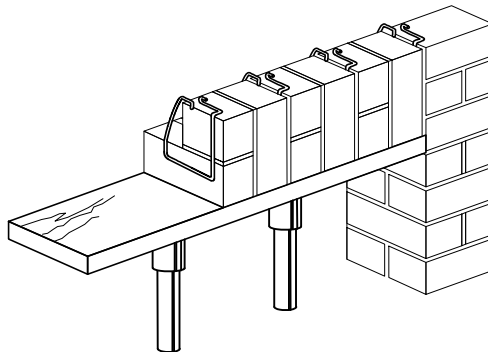


1



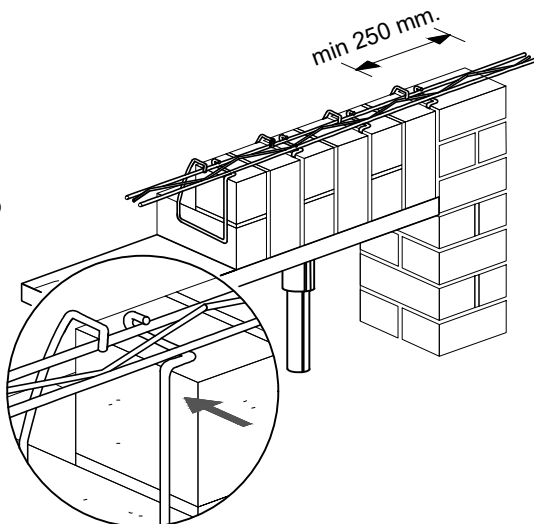
Construction of formwork

2



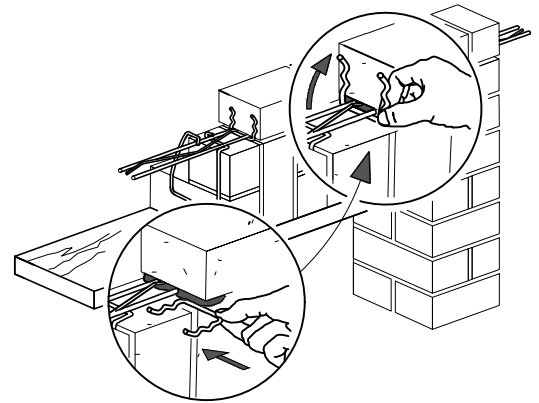
Lintel hooks SKK 50-170 should be placed into the mortar, in every second vertical joint of the first row of brickwork

3



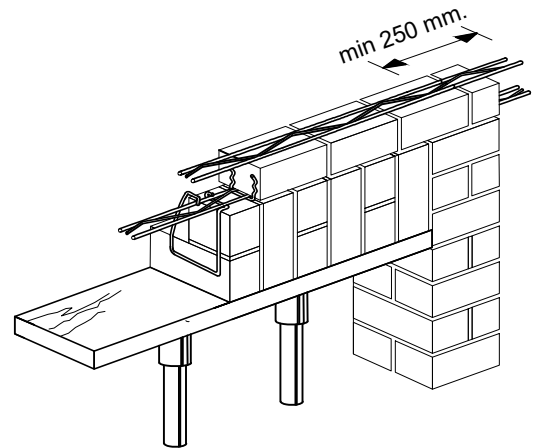
Reinforcement Murfor RND/Z-50 is inserted through grooves of lintel hooks. Reinforcement rods extend beyond the opening edges by at least 250 mm in both sides

4



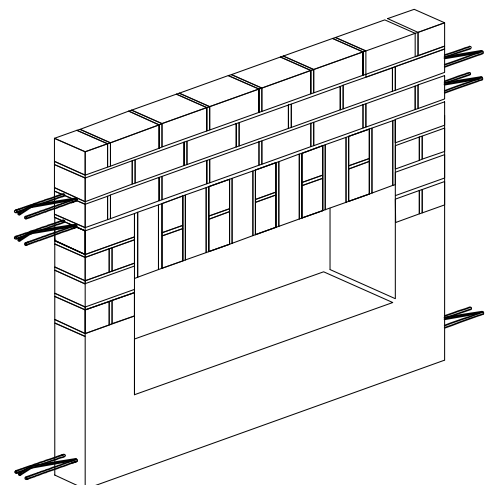
Lintel hooks SU 50-45 in every second vertical joint of the second course

5



Reinforcement Murfor RND/Z-50 in the second course of brickwork. Further throughout the height, 1 reinforcement rod at every 300...500 mm

6



Formwork should be dismantled after 2 weeks

# MOUNTING OF LINTELS WITH SUSPENDED BRACKETS

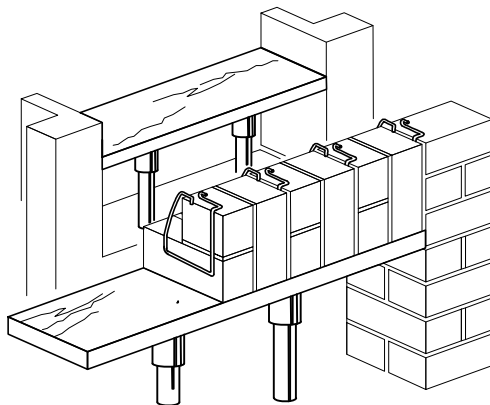
Combined course brickwork

## S4-03

Page 3 of 3

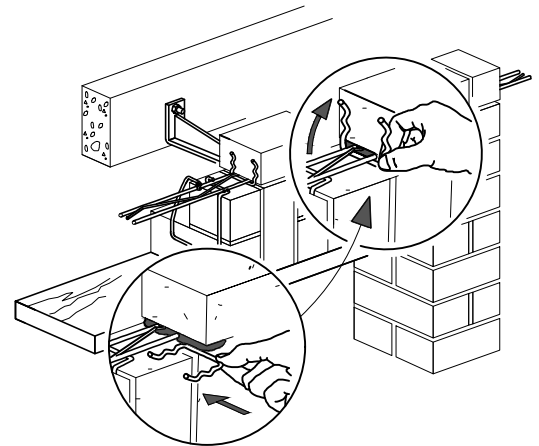


1



Construction of formwork. Lintel hooks SKK 50-170 in every second vertical joint of the first course

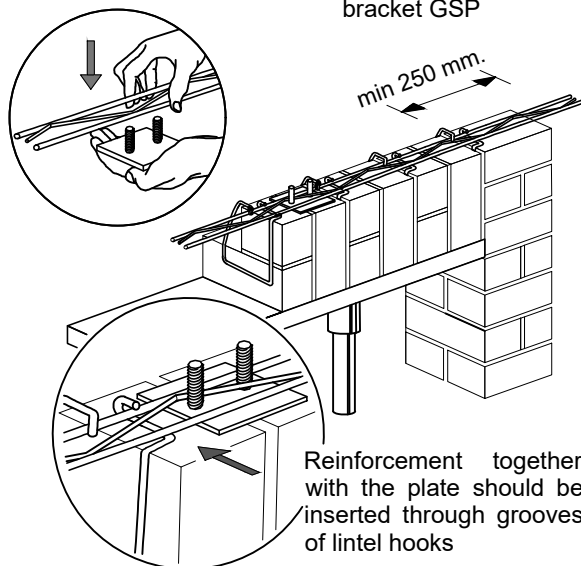
4



Lintel hooks SU 50-45 in every second vertical joint of the second course

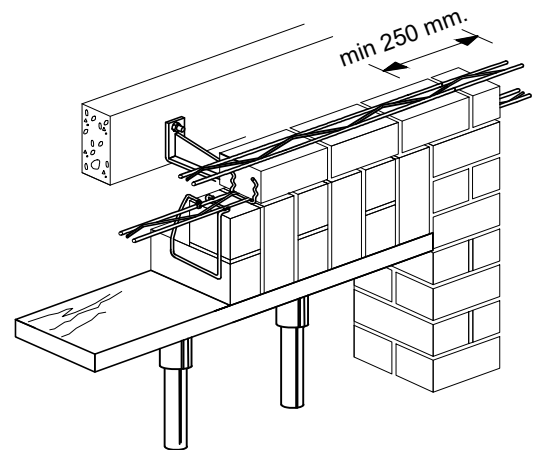
2

Connection of reinforcement Murfor RND/Z-50 with the bottom part of suspended bracket GSP



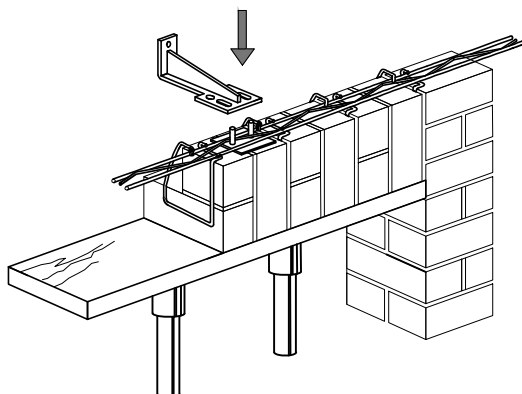
Reinforcement together with the plate should be inserted through grooves of lintel hooks

5



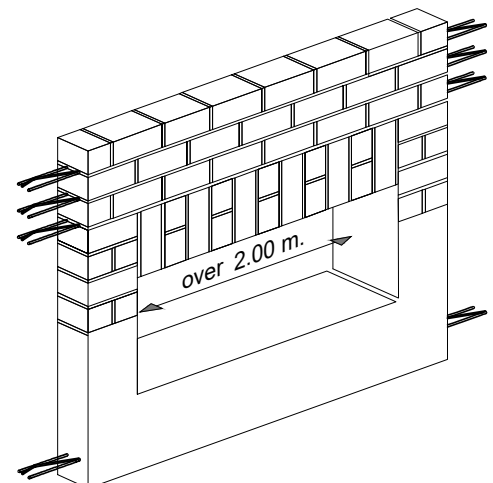
Reinforcement Murfor RND/Z-50 in the second and the third rows of brickwork. Further throughout the height, 1 reinforcement rod in every 300...500 mm

3



Fixation of suspended bracket GSP

6



Formwork should be dismantled after 2 weeks